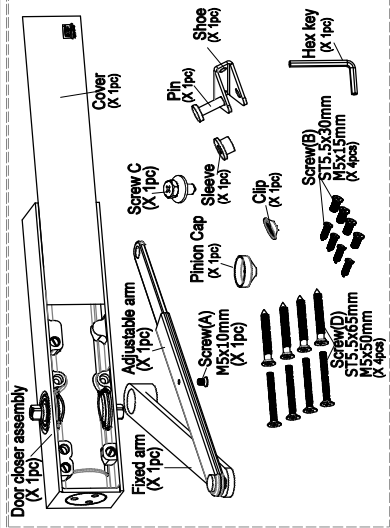
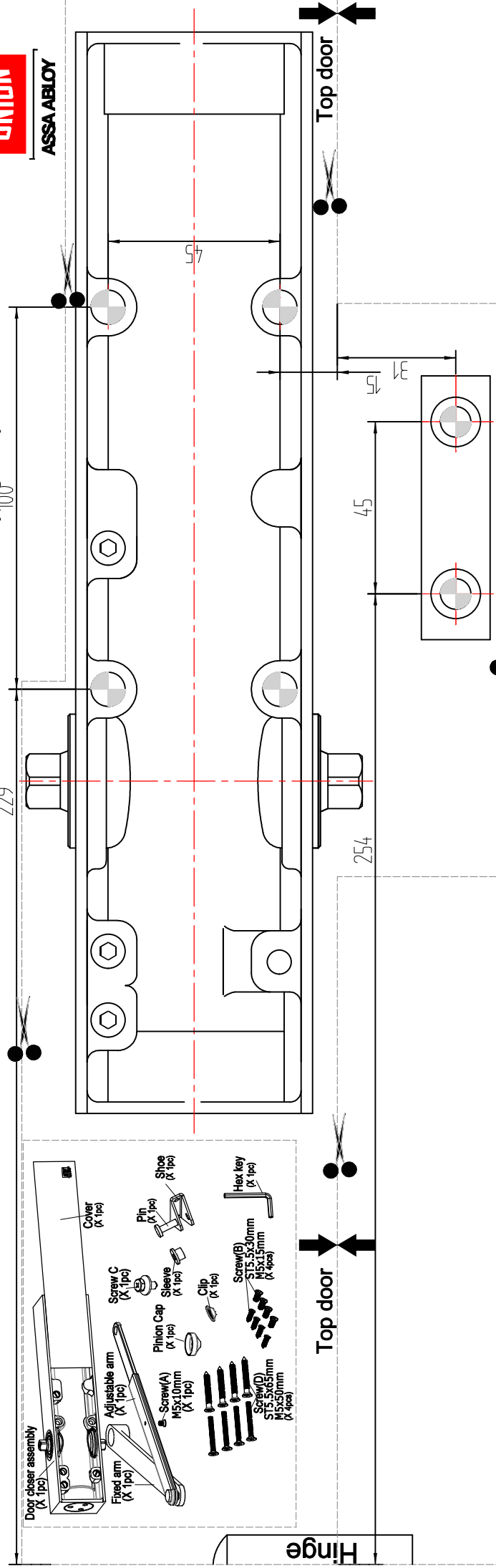


CE26V Rack And Pinion Closer - Transom (Fig 61) Left Hand



Tools required:
Screw driver
Spirit level
Spanner

SEVERE LIGHT/OFF (indicated with a minus sign and a crossed-out lightbulb icon)
FAST SLOW (indicated with a plus sign and a crossed-out lightbulb icon)

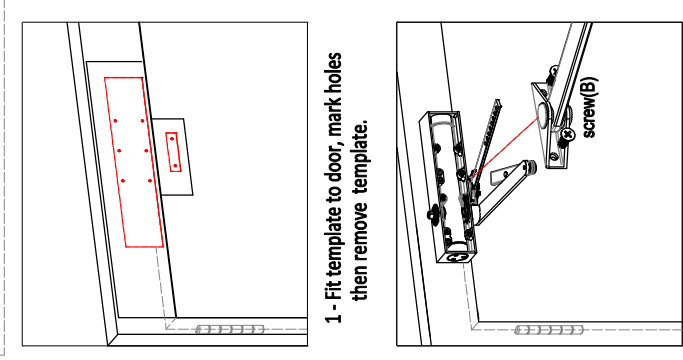
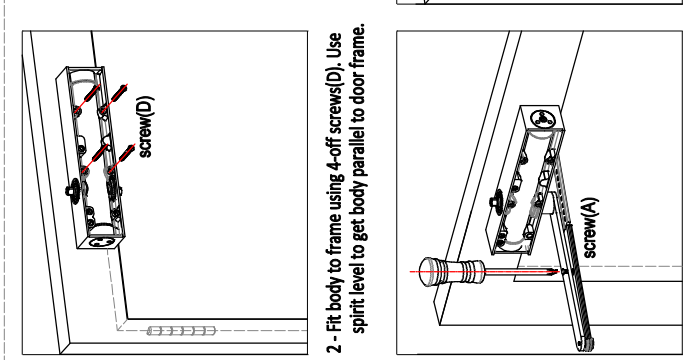
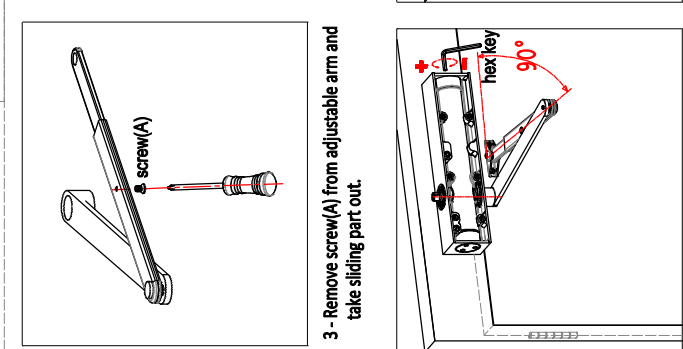
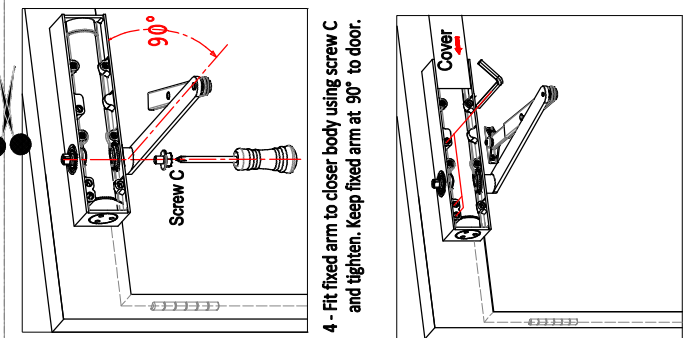
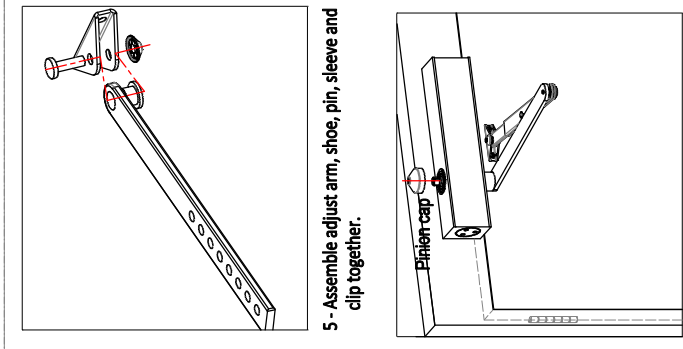
BACKCHECK (indicated with a crossed-out hammer icon)

Closing speed (indicated with a dial showing 0°, 15°, 75°, 160°)

POWER ADJUSTMENT
2 → 3 → 6
O2 Factory Preset Ox17

EN1154

Factory Preset at 3

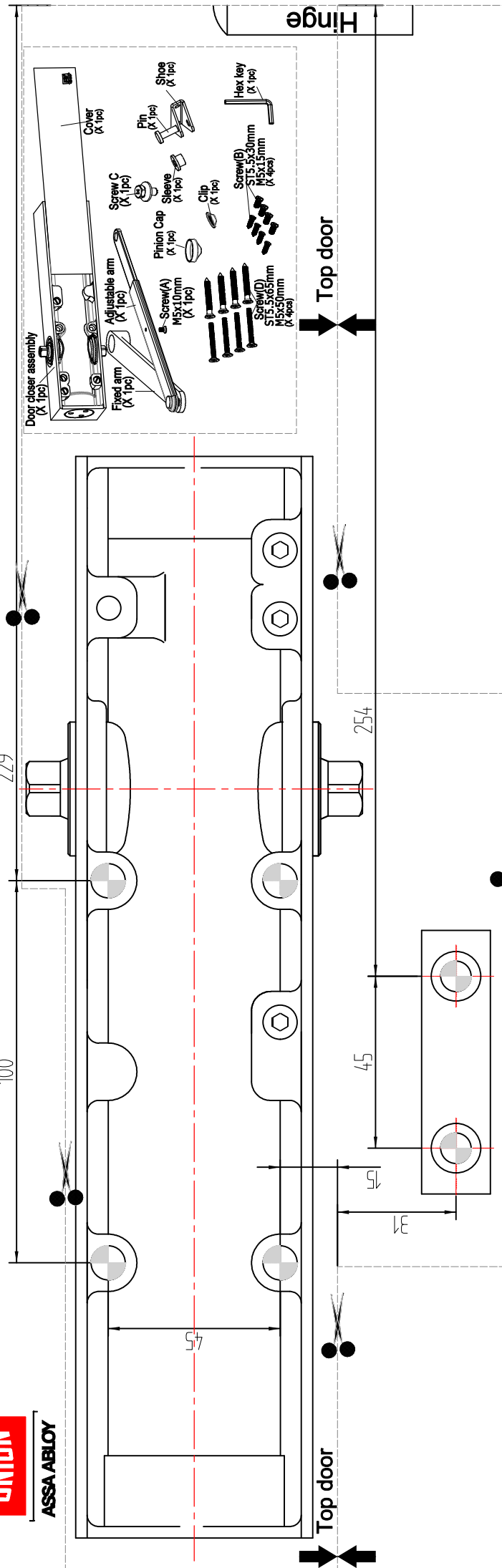


Assembly complete

20170626A-1
Issue No 7/20

UNIDIN ASSA ABLOY

CE26V Rack And Pinion Closer - Transom (Fig 61) Right Hand



Tools required:
Screw driver
Spirit level
Spanner

EN1154
Factory Preset at 3

POWER ADJUSTMENT
2 → 3 → 6
On 2 Factory Preset On 17

FAST SLOW
+ -

BACKCHECK
Closing speed
0°
15°
75°
160°

Factory Preset at 3

150mm/6kg
130mm/6kg
110mm/6kg
120mm/6kg
140mm/12kg

- 1 - Fit template to door, mark holes then remove template.
- 2 - Fit body to frame using 4-off screws(D). Use spirit level to get body parallel to door frame.
- 3 - Remove screw(A) from adjustable arm and take sliding part out.
- 4 - Fit fixed arm to closer body using screw C and tighten. Keep fixed arm at 90° to door.
- 5 - Assemble adjust arm, shoe, pin, sleeve and clip together.
- 6 - Fit adjustable arm to door using 2-off screws(B).
- 7 - Move fixed arm to meet adjustable arm, slide adjustable arm inside the channel. Keep adjustable arm at 90° and tighten screw(A) to lock sliding arm in place.
- 8 - According to door details (see table at side of template), adjust the closer power with hex key.
- 9 - Use hex key to adjust Speed and Latch valves and BC valves, assemble cover into body.
- 10 - Put pinion cap on body.